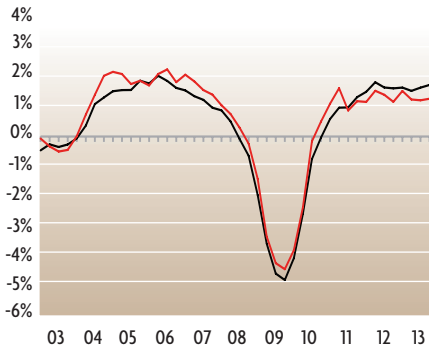


STATE DATA, Q4:13

	DC	MD	NC	SC	VA	WV
Nonfarm Employment (000s)	747.9	2,604.2	4,100.0	1,916.8	3,766.9	764.5
Q/Q Percent Change	0.2	0.3	1.1	0.9	0.0	0.2
Y/Y Percent Change	0.8	0.7	2.2	2.4	0.2	0.0
Manufacturing Employment (000s)	0.9	105.3	442.8	228.4	229.3	48.5
Q/Q Percent Change	-13.3	-0.8	0.2	1.7	-0.6	-0.2
Y/Y Percent Change	-13.3	-1.9	0.2	3.1	-0.9	-0.3
Professional/Business Services Employment (000s)	155.7	418.4	563.0	239.6	668.2	65.3
Q/Q Percent Change	-0.2	0.5	2.1	-1.2	-1.3	0.3
Y/Y Percent Change	-0.1	1.0	5.0	0.5	-2.1	1.4
Government Employment (000s)	239.0	503.0	719.5	352.5	709.9	154.9
Q/Q Percent Change	0.3	-0.1	1.4	0.4	-0.1	0.3
Y/Y Percent Change	-1.7	-0.4	0.1	1.3	-0.3	0.4
Civilian Labor Force (000s)	367.7	3,110.2	4,666.5	2,170.6	4,234.8	790.1
Q/Q Percent Change	-0.1	-0.4	-0.4	-0.4	-0.1	-0.5
Y/Y Percent Change	-1.3	-0.9	-1.2	-0.7	0.1	-2.1
Unemployment Rate (%)	7.8	6.2	7.2	6.8	5.3	6.2
Q3:13	8.3	6.6	7.9	7.5	5.6	6.5
Q4:12	8.7	6.9	9.0	8.5	5.8	7.2
Real Personal Income (\$Bil)	45.0	299.9	355.9	159.9	375.5	61.5
Q/Q Percent Change	0.1	0.2	0.6	0.6	0.1	-0.1
Y/Y Percent Change	-0.3	-0.5	0.9	1.2	-0.9	-0.5
Building Permits	963	4,308	12,330	5,653	5,713	425
Q/Q Percent Change	-11.0	-13.7	2.6	-9.6	-29.2	-31.1
Y/Y Percent Change	-38.3	10.9	-4.2	23.7	-16.6	-12.6
House Price Index (1980=100)	656.2	414.5	305.1	306.7	402.5	220.3
Q/Q Percent Change	0.8	0.4	0.0	-0.1	0.4	0.1
Y/Y Percent Change	9.9	2.1	1.2	0.8	1.6	1.7

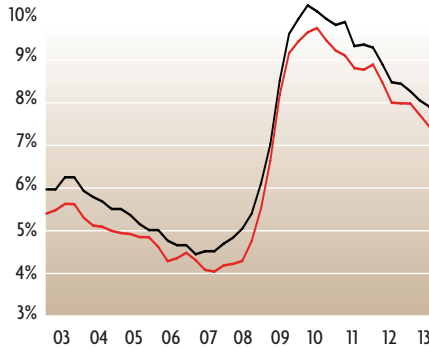
Nonfarm Employment

Change From Prior Year
Fourth Quarter 2002 - Fourth Quarter 2013



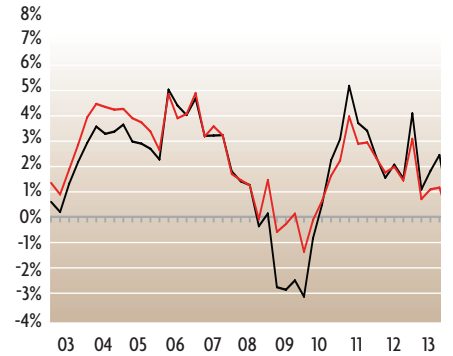
Unemployment Rate

Fourth Quarter 2002 - Fourth Quarter 2013



Real Personal Income

Change From Prior Year
Fourth Quarter 2002 - Fourth Quarter 2013

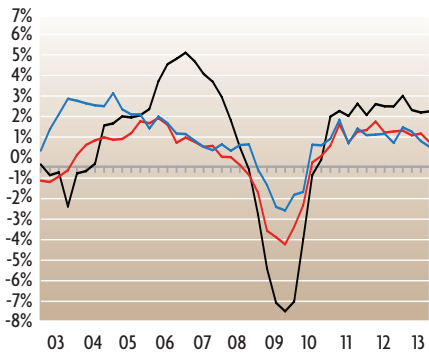


— Fifth District

— United States

Nonfarm Employment Major Metro Areas

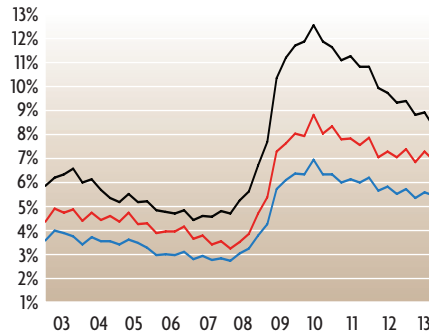
Change From Prior Year
Fourth Quarter 2002 - Fourth Quarter 2013



— Charlotte — Baltimore — Washington

Unemployment Rate Major Metro Areas

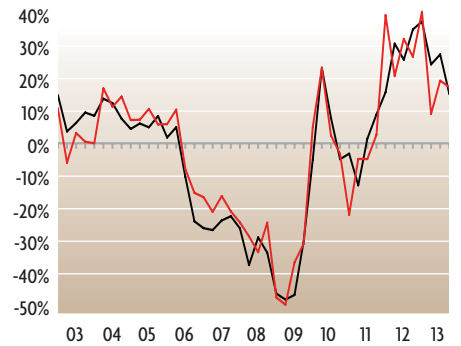
Change From Prior Year
Fourth Quarter 2002 - Fourth Quarter 2013



— Charlotte — Baltimore — Washington

Building Permits

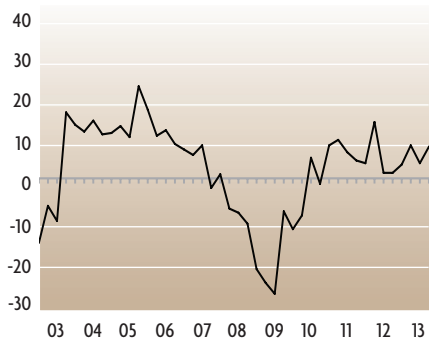
Change From Prior Year
Fourth Quarter 2002 - Fourth Quarter 2013



— Fifth District — United States

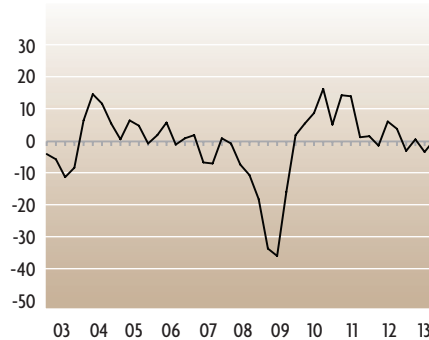
FRB—Richmond Services Revenues Index

Fourth Quarter 2002 - Fourth Quarter 2013



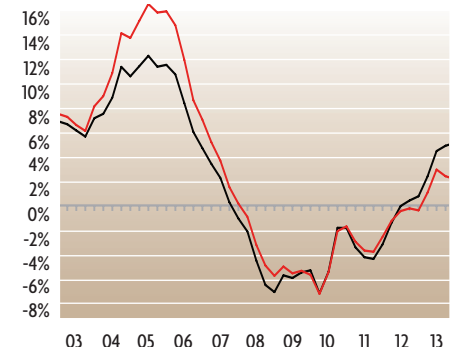
FRB—Richmond Manufacturing Composite Index

Fourth Quarter 2002 - Fourth Quarter 2013



House Prices

Change From Prior Year
Fourth Quarter 2002 - Fourth Quarter 2013



— Fifth District — United States

NOTES:

- 1) FRB-Richmond survey indexes are diffusion indexes representing the percentage of responding firms reporting increase minus the percentage reporting decrease. The manufacturing composite index is a weighted average of the shipments, new orders, and employment indexes.
- 2) Building permits and house prices are not seasonally adjusted; all other series are seasonally adjusted.

SOURCES:

Real Personal Income: Bureau of Economic Analysis/Haver Analytics.
 Unemployment Rate: LAUS Program, Bureau of Labor Statistics, U.S. Department of Labor, <http://stats.bls.gov>.
 Employment: CES Survey, Bureau of Labor Statistics, U.S. Department of Labor, <http://stats.bls.gov>.
 Building Permits: U.S. Census Bureau, <http://www.census.gov>.
 House Prices: Federal Housing Finance Agency, <http://www.fhfa.gov>.

For more information, contact Jamie Feik at (804)-697-8927 or e-mail Jamie.Feik@rich.frb.org

METROPOLITAN AREA DATA, Q4:13

	Washington, DC	Baltimore, MD	Hagerstown-Martinsburg, MD-WV
Nonfarm Employment (000s)	2,507.1	1,328.9	104.3
Q/Q Percent Change	0.8	1.8	0.7
Y/Y Percent Change	0.5	1.5	0.3
Unemployment Rate (%)	5.1	6.4	6.7
Q3:13	5.4	6.7	7.0
Q4:12	5.6	7.2	7.8
Building Permits	5,575	1,349	234
Q/Q Percent Change	-3.1	-43.9	-9.7
Y/Y Percent Change	-12.8	-21.3	-7.1

	Asheville, NC	Charlotte, NC	Durham, NC
Nonfarm Employment (000s)	178.0	892.0	289.9
Q/Q Percent Change	2.2	2.6	2.6
Y/Y Percent Change	2.7	2.4	2.1
Unemployment Rate (%)	5.5	7.2	5.5
Q3:13	6.1	7.9	6.0
Q4:12	7.3	9.1	7.0
Building Permits	371	4,156	689
Q/Q Percent Change	-11.2	42.8	-48.2
Y/Y Percent Change	40.0	33.6	32.8

	Greensboro-High Point, NC	Raleigh, NC	Wilmington, NC
Nonfarm Employment (000s)	351.3	555.1	143.4
Q/Q Percent Change	2.2	2.2	0.3
Y/Y Percent Change	1.2	4.0	2.7
Unemployment Rate (%)	7.5	5.7	7.3
Q3:13	8.2	6.2	8.1
Q4:12	9.4	7.3	9.2
Building Permits	493	3,092	1,028
Q/Q Percent Change	-26.0	32.6	12.0
Y/Y Percent Change	24.5	-36.0	52.5

	Winston-Salem, NC	Charleston, SC	Columbia, SC
Nonfarm Employment (000s)	211.5	311.9	366.4
Q/Q Percent Change	2.1	-0.1	1.8
Y/Y Percent Change	1.9	1.1	0.9
Unemployment Rate (%)	6.6	5.7	6.1
Q3:13	7.2	6.2	6.7
Q4:12	8.5	6.9	7.4
Building Permits	201	1,069	892
Q/Q Percent Change	-66.6	-16.9	-2.0
Y/Y Percent Change	26.4	2.6	1.7

	Greenville, SC	Richmond, VA	Roanoke, VA
Nonfarm Employment (000s)	317.4	639.1	160.0
Q/Q Percent Change	1.7	0.8	0.9
Y/Y Percent Change	2.8	0.8	0.4
Unemployment Rate (%)	5.7	5.5	5.4
Q3:13	6.3	5.8	5.8
Q4:12	7.0	6.2	6.0
Building Permits	660	970	166
Q/Q Percent Change	-17.7	-40.1	52.3
Y/Y Percent Change	-2.7	-22.1	58.1

	Virginia Beach-Norfolk, VA	Charleston, WV	Huntington, WV
Nonfarm Employment (000s)	752.9	145.6	115.5
Q/Q Percent Change	-0.9	-0.4	2.6
Y/Y Percent Change	0.0	-1.4	0.2
Unemployment Rate (%)	5.7	5.6	6.7
Q3:13	6.0	5.8	7.0
Q4:12	6.3	6.8	7.2
Building Permits	811	24	50
Q/Q Percent Change	-67.6	-52.9	163.2
Y/Y Percent Change	-27.6	-36.8	525.0

For more information, contact Jamie Feik at (804) 697-8927 or e-mail Jamie.Feik@rich.frb.org